

## Join the Northwest Basket Weavers!

Send this form to:

Northwest Basket Weavers  
 P.O. Box 75131  
 Seattle, WA 98125-0131

Name \_\_\_\_\_

Address \_\_\_\_\_

State \_\_\_\_\_ Zip Code \_\_\_\_\_

E-Mail \_\_\_\_\_

Phone- home \_\_\_\_\_  
 work \_\_\_\_\_  
 cell \_\_\_\_\_

\_\_\_\_ I wish to receive a paper copy of the newsletter, not via e-mail

\_\_\_\_ \$25 general membership annual dues

\_\_\_\_ \$35 business membership annual dues

\_\_\_\_ New Member \_\_\_\_ Renewing Member

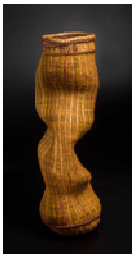
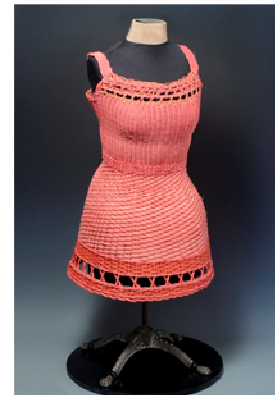
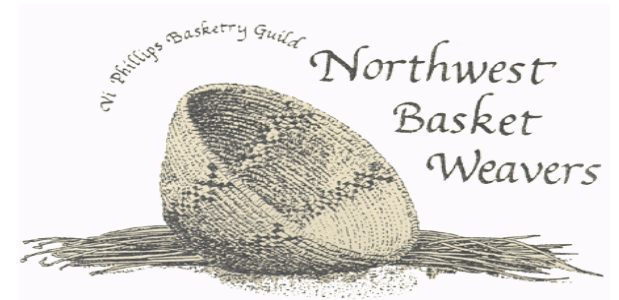
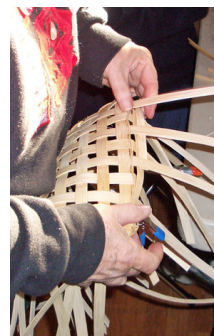
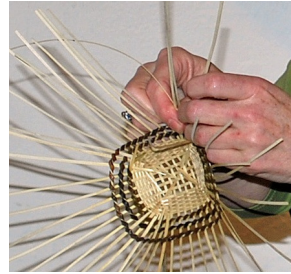
How did you learn about the guild? \_\_\_\_\_

### Types of baskets made:

- |                       |                              |
|-----------------------|------------------------------|
| (1) ____ Traditional  | (7) ____ Cedar & NW naturals |
| (2) ____ Contemporary | (8) ____ Pine Needle         |
| (3) ____ Ribbed       | (9) ____ Splint Work         |
| (4) ____ Coiled       | (10) ____ Willow             |
| (5) ____ Knotted      | (11) ____ Other              |
| (6) ____ Twined       |                              |

### Types of Basketry Involvement:

- |                              |                    |
|------------------------------|--------------------|
| (20) ____ Personal enjoyment |                    |
| (21) ____ Show my work       |                    |
| (22) ____ Sell my baskets    |                    |
| (23) ____ Sell supplies      |                    |
| (24) ____ Collect baskets    |                    |
| (25) ____ Teach              | (27) ____ Lecturer |
| (26) ____ Author             | (28) ____ Other    |



## **Promoting the Art and Tradition of Basketry since 1982:**

- **To study, share and practice weaving techniques**
- **To gather and use native materials**
- **To identify, collect and appreciate basketry**
- **To promote the art of basketry to the public**

Our membership includes over 200 professional and amateur basketmakers from throughout the Pacific Northwest, British Columbia and across the United States. We welcome anyone interested in and enthusiastic about basketry to join the Guild.

### **Monthly Programs**

The Guild meets on the second Wednesday of January, February, March, April, May, June, September, October and November. Meeting programs offer members an opportunity to hear presentations from contemporary basket artists, learn about the history of basketry, how to gather and prepare materials, and hands-on sessions on specific techniques or basket patterns. At the November meeting we enjoy a potluck and gift exchange (optional). The Guild's extensive library is accessible to members before and after meetings.

Meetings are held in north Seattle; see our website for the address and directions. We begin with a Social Hour at 6:30 p.m., Show and Tell at 7:00 followed by announcements. The monthly Program begins at 7:30 p.m.

### **Monthly Newsletter**

The guild newsletter is a great way for members who may not be able to attend meetings to be informed about guild activities. It is published eleven times a year, and includes notes of the previous month's program, book reviews, listings of classes offered by guild members, announcements of upcoming local and national shows, business notes from the guild's board, as well as other articles of interest and tidbits from other newsletters.

### **Annual Events**

The Guild holds a five-day weaving **retreat** in March, which is great for inspiration and fellowship and offers a large variety of classes and demos. Information about past retreats can be found on the guild website. The annual meeting is held at retreat.

**Basket Day** is held in late summer at a park in the Seattle area, short classes are offered to guild members and the public. This is a great casual day to meet with others and learn some new basket skills. New in 2006, the guild added a second Basket Day in another area of Washington, moving the location each year to offer low cost short classes to introduce interested members of the public to basketmaking.

### **Classes**

Many Guild Members offer basketmaking classes using a wide variety of techniques and materials. Our newsletter includes a listing of classes, as well as announcements for upcoming special workshops and conferences.

Interested members may form small study groups offering a chance to get together to

pursue a common interest. Or, a member may host an informal gathering that we call "bring your own basket". Often these are a way for members in outlying areas to get together. Dates, times and locations are announced in the newsletter.

The Guild is continually working to promote the art of basketry and supports educational opportunities for members and the general public.

- Members may apply for Study Grants.
- Special workshops and lectures featuring well-known basketmakers are sponsored by the guild.
- The Guild provides volunteers to demonstrate basketry techniques in support of local Museum shows, fairs and special events.
- The Guild works to sponsor shows of members work every couple of years in well respected galleries.
- In 2003, we sponsored a national-level basketry conference.

Our members have reciprocal privileges with the Columbia Basin Basketry Guild in Portland Oregon, including attendance at retreats and sponsored workshops. Their retreat is in the fall, nicely complementing our spring activity.

General membership dues are \$25, \$35 for business members.

The Board meets quarterly, notification of meetings is published in the newsletter, and meetings are open to all members.

**Please visit our website for additional info: [www.nwbasketweavers.org](http://www.nwbasketweavers.org)**